

How New West Solutions are Impacting Old West Settings

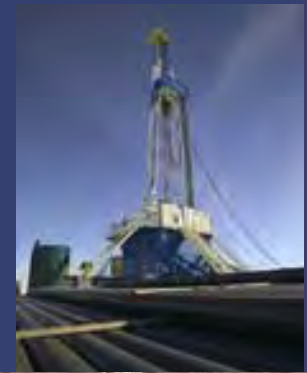
Mountain Plains Museum Association
Mary Hopkins
Interim SHPO Wyoming
Cheyenne, Wyoming
2009

ARTS. PARKS. HISTORY.

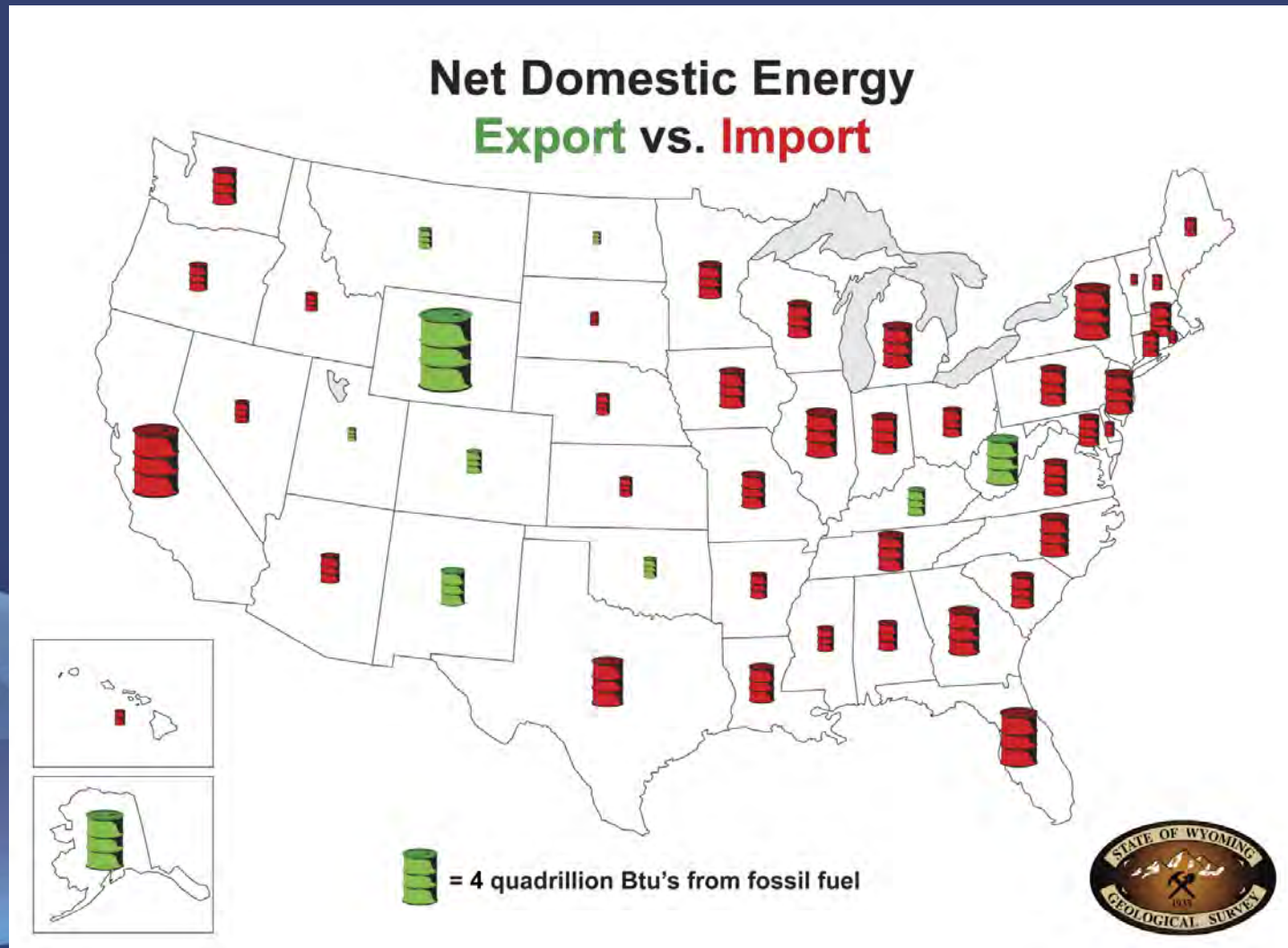
Wyoming State Parks & Cultural Resources

What is driving the SHPO workload in the West? The obvious:

- Increased energy production
- Increased need for expedient permit processing
- Need for better resource management and decision making tools
- Need for better understanding of resources
- Responsibility to insure a public benefit



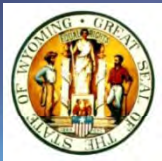
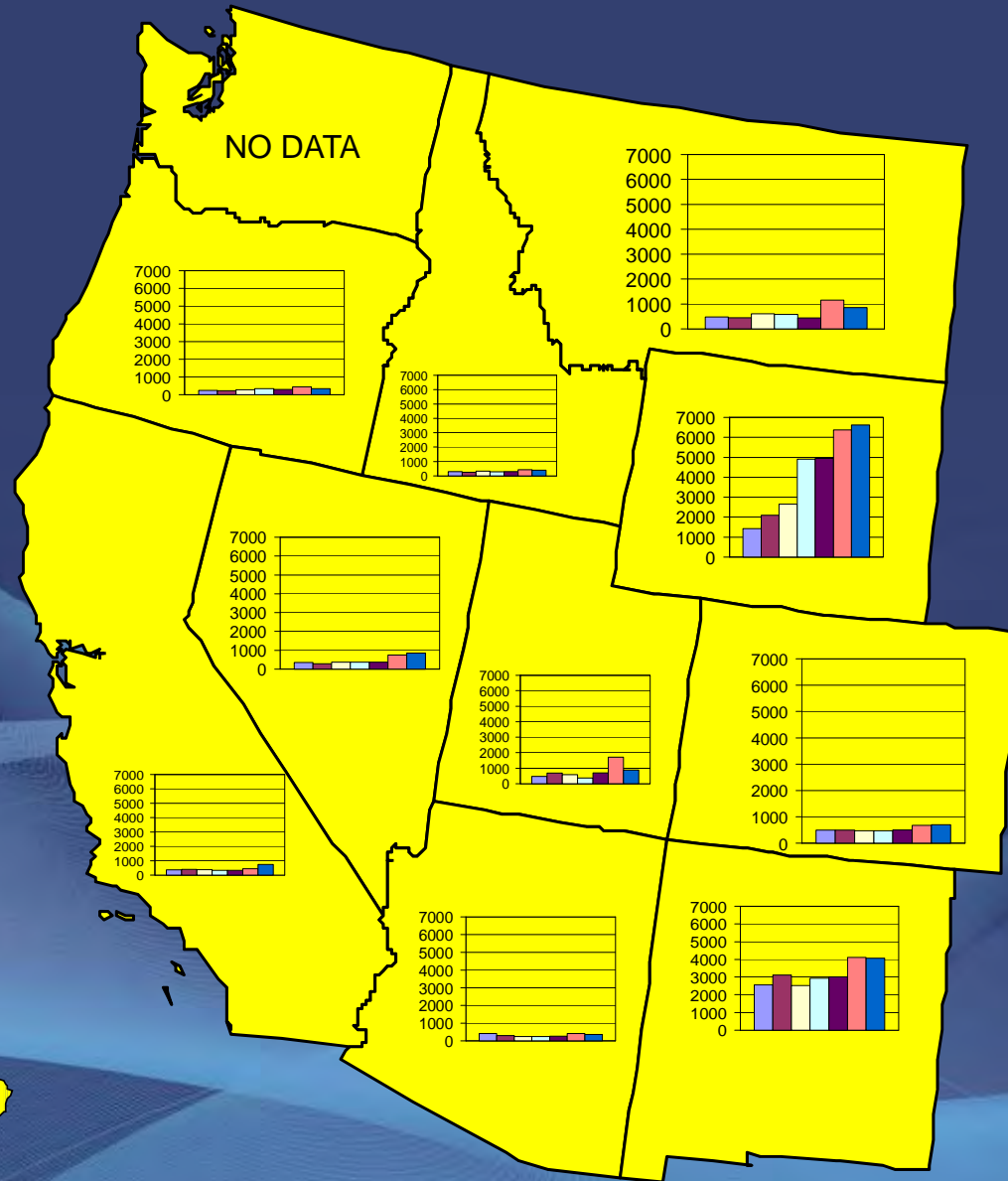
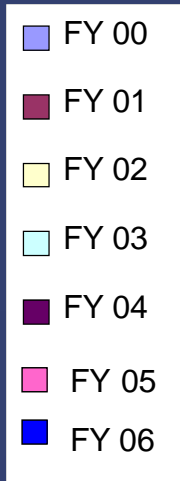
Energy Export vs. Import



ARTS. PARKS. HISTORY.

Wyoming State Parks & Cultural Resources

Section 106 Undertakings 2000 - 2006

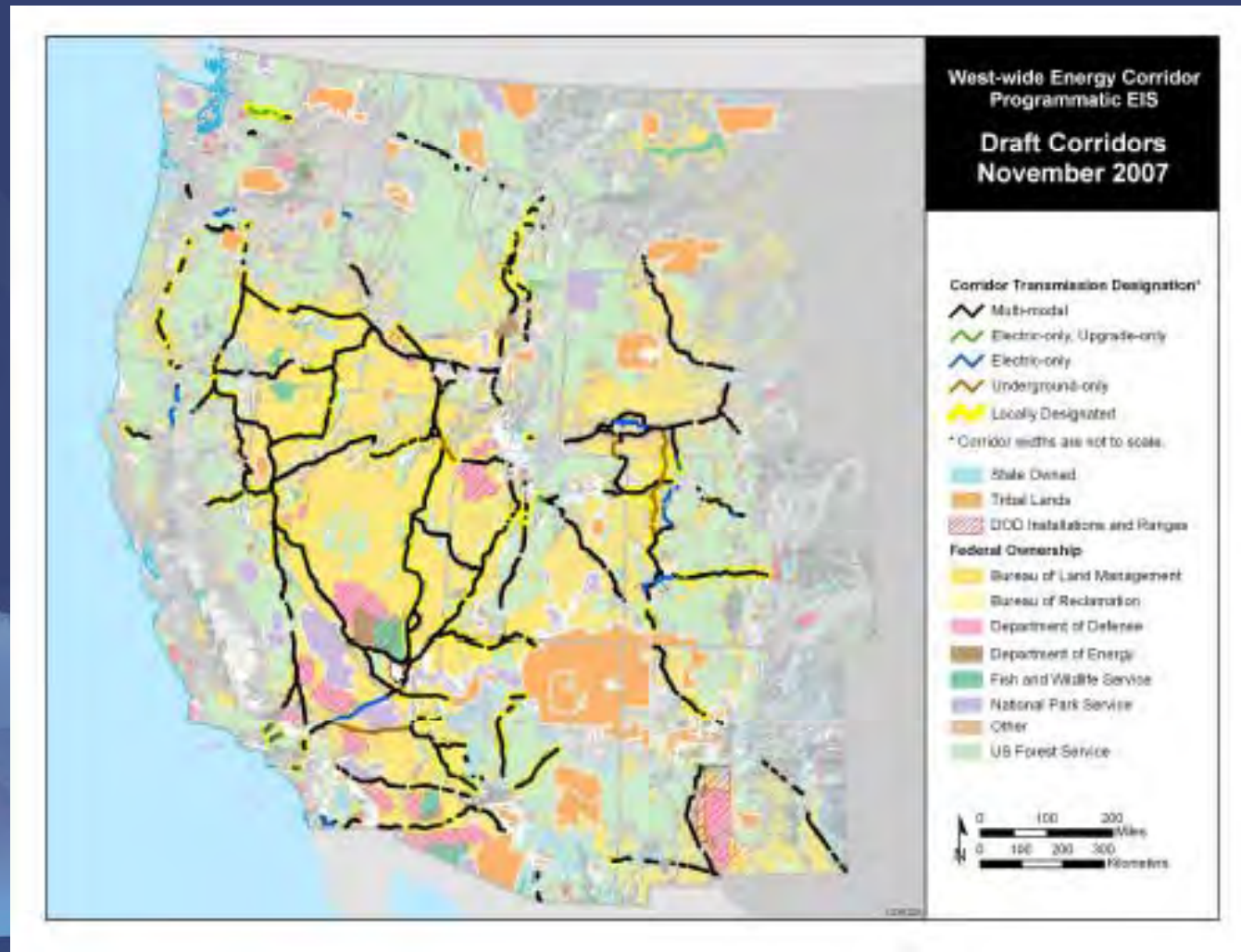


ARTS. PARKS. HISTORY.

Wyoming State Parks & Cultural Resources

note: Alaska not shown to

West-wide Energy Corridor Programmatic EIS Proposed Corridors



Jonah Oil and Gas Field South of Pinedale, Wyoming



ARTS. PARKS. HISTORY.

Wyoming State Parks & Cultural Resources

Well location near Lander Cutoff
of the Oregon Trail National Historic Trail
Well is sited on State Property



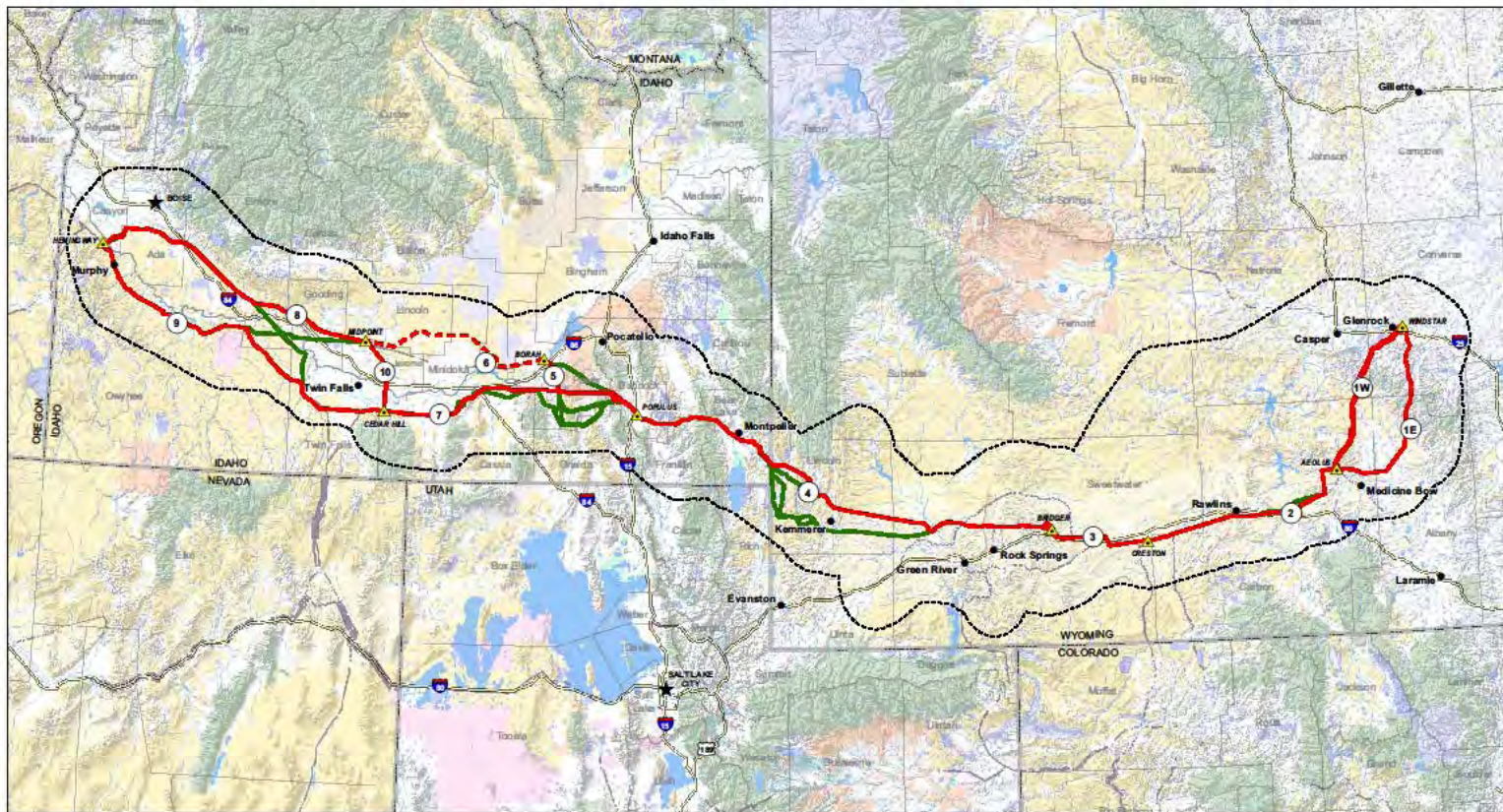
Camouflaged Well and Tanks



ARTS. PARKS. HISTORY.

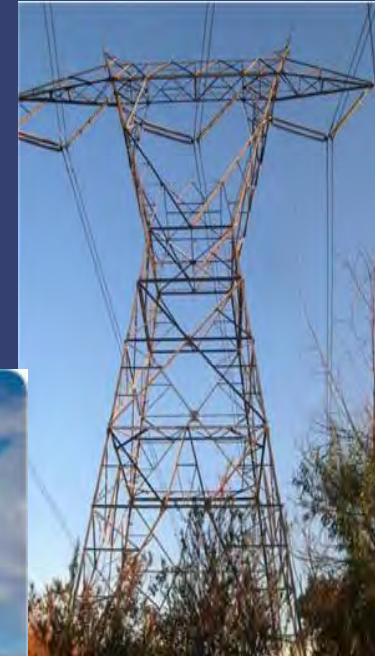
Wyoming State Parks & Cultural Resources

Proposed Transmission Issues

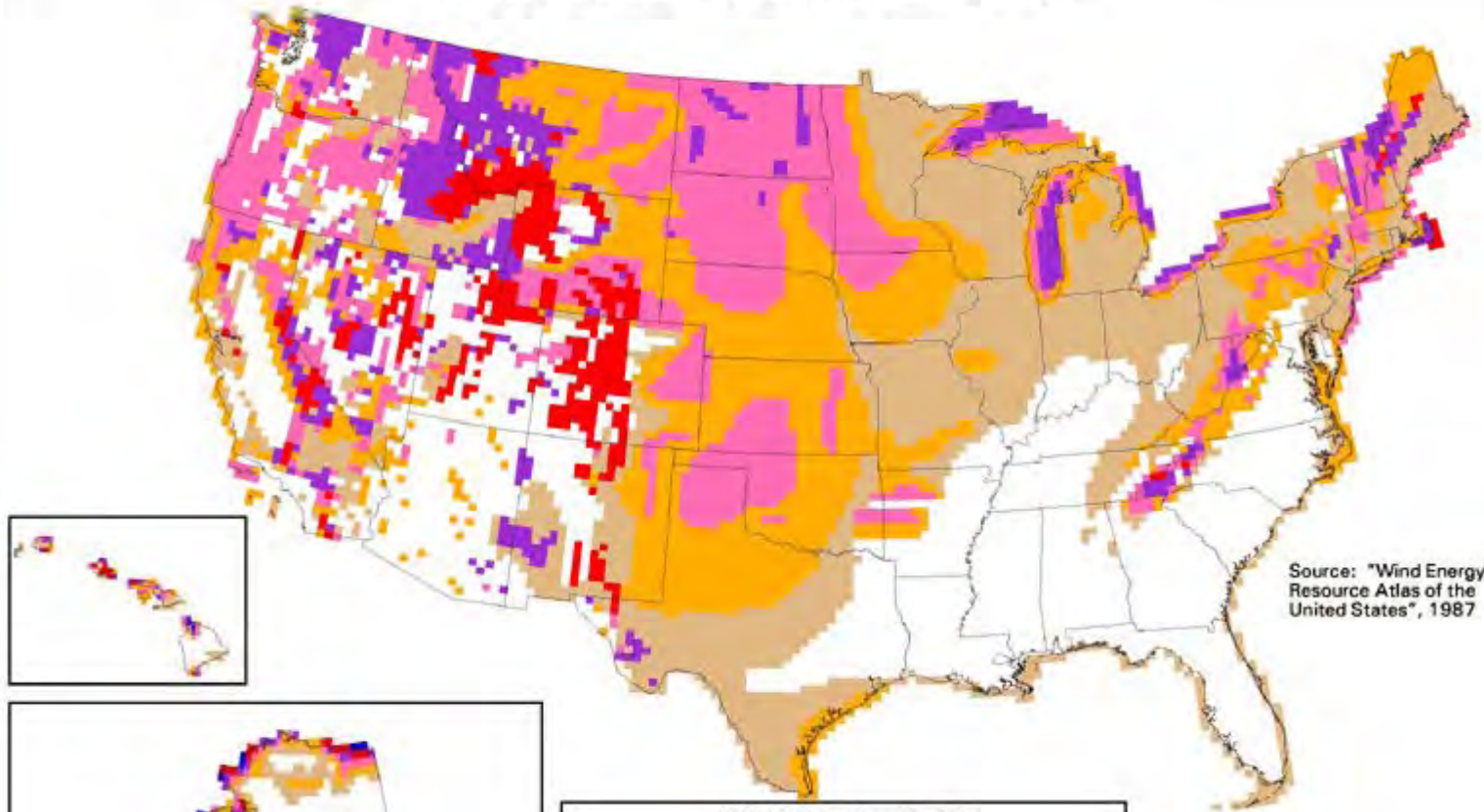


<p>Rocky Mountain Power Idaho Power</p>	<p>Project Features</p> <ul style="list-style-type: none"> Approximate Substation Location Segment Designation Proposed Route No New Transmission Facilities Required Feasible Alternative Route Study Area Boundary Draft West-Wide Energy Corridor 	<p>Administrative</p> <ul style="list-style-type: none"> City County Boundary State Boundary <p>Transportation</p> <ul style="list-style-type: none"> Highway 	<p>Land Status</p> <ul style="list-style-type: none"> Bureau of Land Management Bureau of Reclamation Department of Energy Indian Reservation Department of Defense US Fish and Wildlife State Lands US Forest Service National Park Service Private 	<p>Gateway West Transmission Line Project Idaho, Wyoming Project Overview FIGURE 1-1</p>
---	--	---	---	---

Proposed Transmission Issues



United States - Wind Resource Map



Source: "Wind Energy Resource Atlas of the United States", 1987

Wind Power Classification

Wind Power Class	Resource Potential	Wind Power Density at 50 m W/m ²	Wind Speed ^a at 50 m m/s	Wind Speed ^a at 50 m mph
2	Marginal	200 - 300	5.6 - 6.4	12.5 - 14.3
3	Fair	300 - 400	6.4 - 7.0	14.3 - 15.7
4	Good	400 - 500	7.0 - 7.5	15.7 - 16.8
5	Excellent	500 - 600	7.5 - 8.0	16.8 - 17.9
6	Outstanding	600 - 800	8.0 - 8.8	17.9 - 19.7
7	Superb	800 - 1600	8.8 - 11.1	19.7 - 24.8

^aWind speeds are based on a Weibull k value of 2.0

U.S. Department of Energy
National Renewable Energy Laboratory



20-MAR-2000 1.1.5

Wind energy resources in the United States

Wind Turbines at Arlington, Wyoming note vehicles for scale



Simulation of Simpson Ridge Wind Farm



Wyoming's Preservation Challenges

- ✓ Develop strong advocacy groups
- ✓ Interested Parties must be involved early in the S106 process
- ✓ Develop strong partnerships with THPO's and NTHP
- ✓ Education of policy makers, city and county planners and the public



Preservation Issues and Historic Trails

Land Ownership Patterns
Split Estate
Checkerboard

Few State Statutes or Rules

View sheds are difficult
to protect.

Trails are dissected –
cumulative effects are
difficult to address.



ARTS. PARKS. HISTORY.

Wyoming State Parks & Cultural Resources

So what is SHPO doing?

Working with Federal Agencies on RMP's, EA and EIS
Planning is the critical stage of the Federal Process!

Developing historic context
\$436,000 FY 09-10 Budget from Wyoming Legislature

Actively negotiating programmatic agreements to streamline
S106 Process on "No Effect" Undertakings
VRM is now part of CRM process

Negotiating Memorandum of Agreements with all
parties and interested public at the table.

Encouraging the NTHP, Tribes, Interested Parties, and ACHP
to participate early in the S106 process

Wyoming SHPO contact:
Mary Hopkins
Interim SHPO
hopkins@uwyo.edu
website: <http://wyoshpo.state.wy.us>

