

# Yellowstone National Park National Park Service



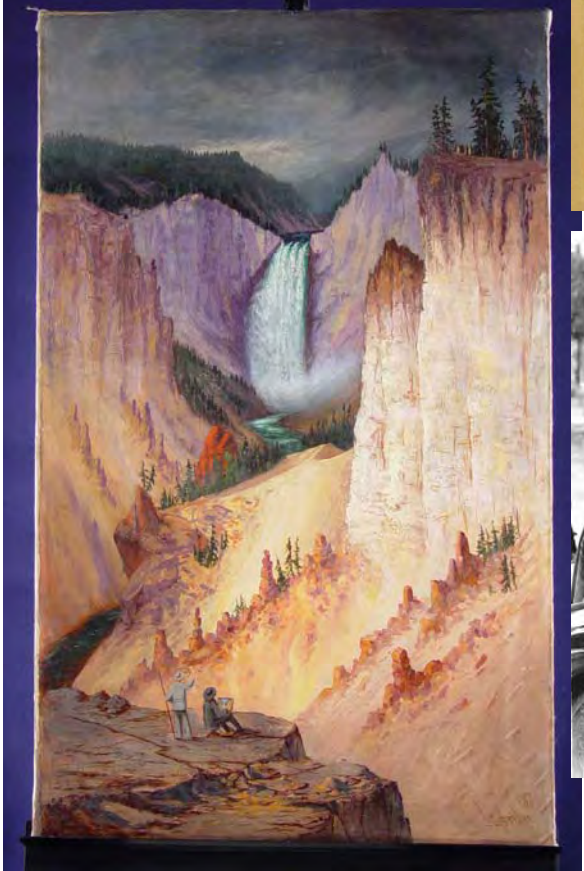
Heritage and Research Center – Gardiner, MT

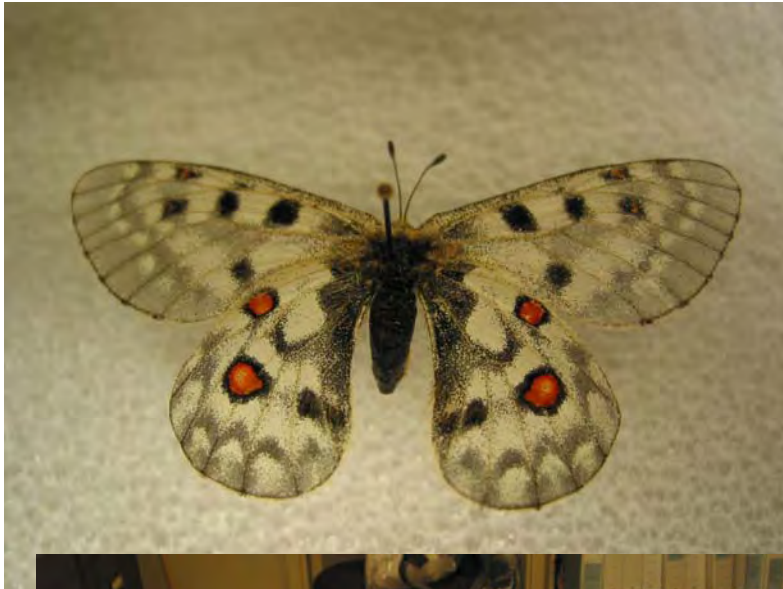


# Archives, Library and Museum Collections Yellowstone National Park

- 1,000+ linear feet of archival items
- 1,000 linear feet of library holdings
- 300,000 museum objects
  - 90,000 historic photographs
  - 107,000 archeological artifacts
  - 43,000 historic objects
  - 46,000 geological, paleontological and biological specimens
  - 250 ethnological objects
  - 300 works of art
  - 32 historic vehicles







# Historic Structures within the Park

Yellowstone National Park has over 1500 buildings on its 2.2 million acres; over half of these are historic (National Register-eligible) and comprise 5% of all historic structures within the National Park Service.

1 National Historic Landmark District: Fort Yellowstone

6 National Historic Landmarks:

- Fishing Bridge Trailside Museum
- Madison Junction Trailside Museum
- Norris Geyser Basin Trailside Museum
- Northeast Entrance Station
- Obsidian Cliff
- Old Faithful Inn

5 National Register Historic Districts:

- Lake Fish Hatchery
- Mammoth Hot Springs
- North Entrance Road
- Old Faithful Area
- Roosevelt Lodge

5 National Historic Sites:

- Lake Hotel
- Lamar Buffalo Ranch
- Obsidian Cliff Kiosk
- Queen's Laundry Bath House
- Post Office at Mammoth Hot Springs

# Historic Buildings Containing Museums



Norris Soldier Station (1908)

(Now the Museum of the National Park Ranger)

Bachelor Officers' Quarters (1909)

(Now the Albright Visitor Center)



## Trailside Museums (1929 – 1932)

- Norris Geyser Basin Trailside Museum
- Madison Junction Trailside Museum
- Fishing Bridge Trailside Museum



# Norris Soldier Station – Museum of the National Park Ranger



## Collection Preservation Issues

- Rodents, insects, dirt
- High light levels when open
- No environmental controls
- Inaccessible almost half of the year
- Seasonal removal/return of more fragile exhibit items
  - Textiles, firearms, metals, paper/books



## Solutions:

- UV-coated Plexiglas panels
- Indirect lighting
- Better sealed exhibit cases
- Screen doors?



# Bachelor Officers' Quarters (1909) – Albright Visitor Center

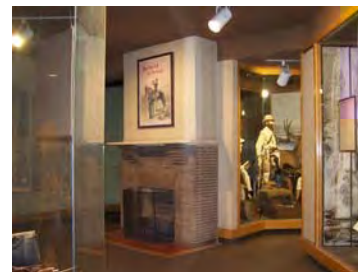


## Collection preservation issues:

- No environmental controls
- Cleaning of spaces by non-curatorial staff
- Heavy visitation limits access to exhibit cases during most of day
- Roof leaks
- Maintenance projects undertaken without notifying curatorial staff (carpet replacement)
- Limited light controls

## Solutions to some issues:

- Utilize building's interior shutters to limit light levels
- Lights on sensors in Moran Gallery
- Try to train custodial staff



# Trailside Museums (1929 – 1932)

Part of national idea at the time that:

- a national park is itself a museum
- an interpretive structure should blend in with its surroundings
- its exhibits should explain but not substitute for the park experience

These museums are well-known examples of an architectural style known as National Park Rustic (“parkitecture”)

Herbert Maier was the architect – funded through the American Association of Museums



# Fishing Bridge Museum

Interprets the ecology of Yellowstone Lake



## Collection preservation issues:

- No environmental controls
- Exhibits themselves are historic
- Three sets of double doors on each wall – lots of light coming in
- Insects, rodents
- Dirt, dust

## Solutions:

- New glass on cases, with UV-film
- Aggressive IPM
- Work closely with Maintenance folks
- Better gaskets on exhibit cases

# Historic Furniture in Historic Lodging Facilities

Yellowstone has 200+ pieces of historic furniture in its collection from various park lodging facilities, employee housing and backcountry cabins. Of these, 54 are still in use in park hotels and inns.



# How do we monitor and account for these?

- Microchips are inserted in the leg bottom of these pieces
- RFID reader used to scan microchips – each piece has unique scan number
- Concessioner scan numbers are cross-referenced to catalog numbers



# Yellowstone National Park



Colleen E. Curry, Curator

307-344-2262

[Colleen\\_Curry@nps.gov](mailto:Colleen_Curry@nps.gov)